



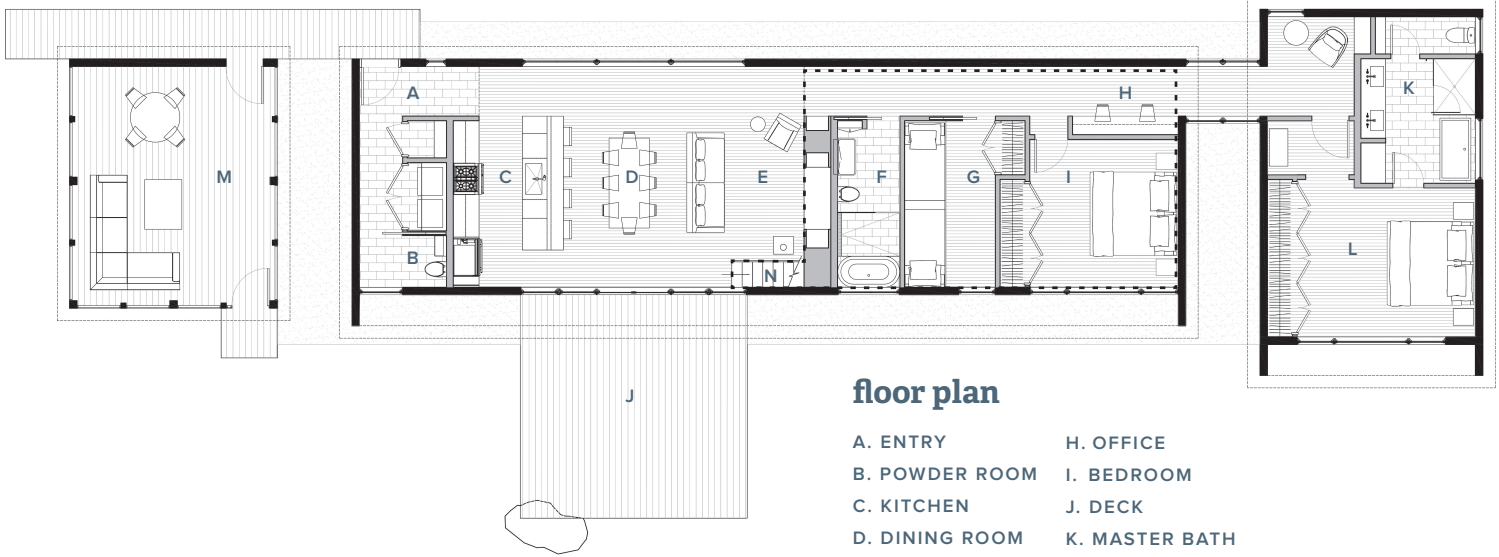
juniper series

THREE BEDROOM

ECO FRIENDLY. ENERGY EFFICIENT. ELEGANT.

Meet the Juniper Series Three Bedroom: our fresh take on the classic mountain cabin. Modest footprint. Passive and solar ready. Carefully considered details. Lots of natural light. That put-your-feet-up vacation feeling, but for every day living. This three bedroom, two and a half bath has 1,870 heated square feet on the main level, plus a 350 square foot finished loft. Ready for some outdoors time? Step onto the custom deck, or relax in the large screened-in porch. It's perfect for a mountain retreat or for a family home.





floor plan

- | | |
|----------------|-------------------|
| A. ENTRY | H. OFFICE |
| B. POWDER ROOM | I. BEDROOM |
| C. KITCHEN | J. DECK |
| D. DINING ROOM | K. MASTER BATH |
| E. LIVING ROOM | L. MASTER BEDROOM |
| F. BATHROOM | M. SCREEN PORCH |
| G. BUNKROOM | N. LOFT ABOVE |

Three Bedroom **juniper** SERIES

interior features

- Vaulted ceiling with steel collar ties
- Open living floor plan
- Morso wood stove
- Built in reading nook
- 3" oak hardwood flooring
- Spray foam insulation in roof
- 9' ceilings with 8' doors
- Customized selections on each home
- Tiled entry and baths

exterior features

- Boral smooth shiplap siding
- Metal clad windows with low-e insulating glass
- Classic rib metal roof
- 2x6 exterior walls for maximum insulation
- Large deck and screened porch

specifications

- Transitional style home
- 1,870 heated square feet on main
- 350 heated square feet finished loft
- 338 square feet screened porch
- 3 Bedrooms on main level, 2.5 bathrooms
- Stainless steel kitchen appliances
- Energy Star Certified
- Utility discounts eligible
- Passive solar design and solar panel ready
- Bosch inverter ducted split system
- Schluter radiant heat bathroom tile floor

SQUARE FOOTAGE 2,220 Total Heated

ARCHITECTURE + DESIGN BY:

RUEGER riley inc