



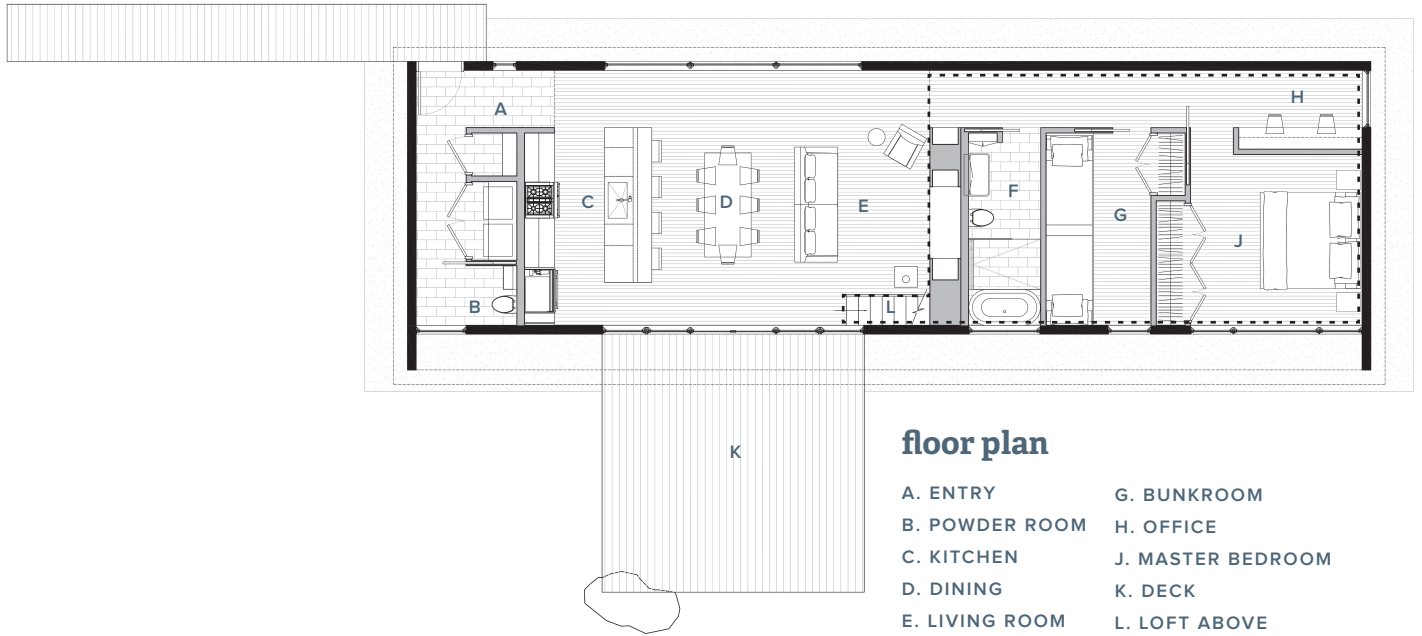
juniper series

TWO BEDROOM

ECO FRIENDLY. ENERGY EFFICIENCY. ELEGANT.

Meet the Juniper Series Two Bedroom: our fresh take on the classic mountain cabin. Small footprint. Passive and solar ready. Carefully considered details. Lots of natural light. That put-your-feet-up vacation feeling, but for every day living. This two bedroom, one and a half bath has 1,350 heated square feet on the main level, plus a 350 square foot finished loft. Ready to relax outside? Step onto the custom deck. It's perfect for a mountain retreat or a small family home.





Two Bedroom

juniper series TWO BEDROOM

interior features

- Vaulted ceiling with steel collar ties
- Open living floor plan
- Morso wood stove
- Built in reading nook
- 3" oak hardwood flooring
- Spray foam insulation in roof
- 9' ceilings with 8' doors
- Customized selections on each home

exterior features

- Boral smooth shiplap siding
- Metal clad windows with low-e insulating glass
- Classic rib metal roof
- 2x6 exterior walls for maximum insulation
- Large deck

specifications

- Transitional style home
- 1,350 heated square feet on main
- 350 heated square foot finished loft
- 2 bedrooms on main level, 1.5 baths
- Stainless steel kitchen appliances
- Energy Star Certified
- Utility discounts eligible
- Passive solar design and solar panel ready
- Bosch inverter ducted split system
- Schluter radiant heat bathroom tile floor

SQUARE FOOTAGE 1,700 Total Heated

ARCHITECTURE + DESIGN BY:

RUEGER riley inc